

# *FLEXIBILITY WITHOUT TOOLING*

## **CENTURION** Series In-Line Capper

*A Standard Approach To Special Problems*

### **What's New With The CENTURION Series?**

- Fully welded type 304 stainless steel frame
- Easy access lube and maintenance
- Redesigned, fully enclosed gripper belt system for greater stability and cleaner operation
- Designed from top to bottom for rapid, repeatable, no-tool changeovers
- Gripper positioning indicators for accurate, rapid changeovers
- Various human machine interface platforms available
- Billow covered elevation system for cleaner operation
- Removable castors
- Stainless steel and glass guarding system fully enclosing machine and conveyor available
- Flexible cable adjustment points for the container gripper belt system, along with the rear and front torquing disks, safely located on operator panel above the quill housing available

### **Be sure to ask about our Rapid-set System**

### **Other Standard Features:**

- Electrically powered elevation
- Heavy-duty air clutches increase the torque pressure and eliminate burning of the cap skirt
- Individual torquing disk adjustment from operator side of unit. Adjustment of front and rear disks can be done separately or simultaneously while machine is in operation.
- Capper can handle continuous thread, sports, child resistant / tamper evident, measure detergent, tall domed, or just about any other cap imaginable, metal or plastic, all with equal efficiency

**PACK  
WEST**

A W.J. Ellison Company  
[www.PACKWEST.com](http://www.PACKWEST.com)



C.E.O., William J. Ellison, and every Pack West employee, is extremely proud of our full line of in-line and rotary fillers and cappers. Every machined and fabricated part is designed and built by Pack West at our facility in Irwindale, California. Since we use no job shops, we can assure our customers that all standard parts that are ordered by noon are shipped the very same day. The few purchased parts we do use on our machines, such as motors, gear boxes, belts, hoses, etc... are from the highest quality, American companies.

# Features and Specifications

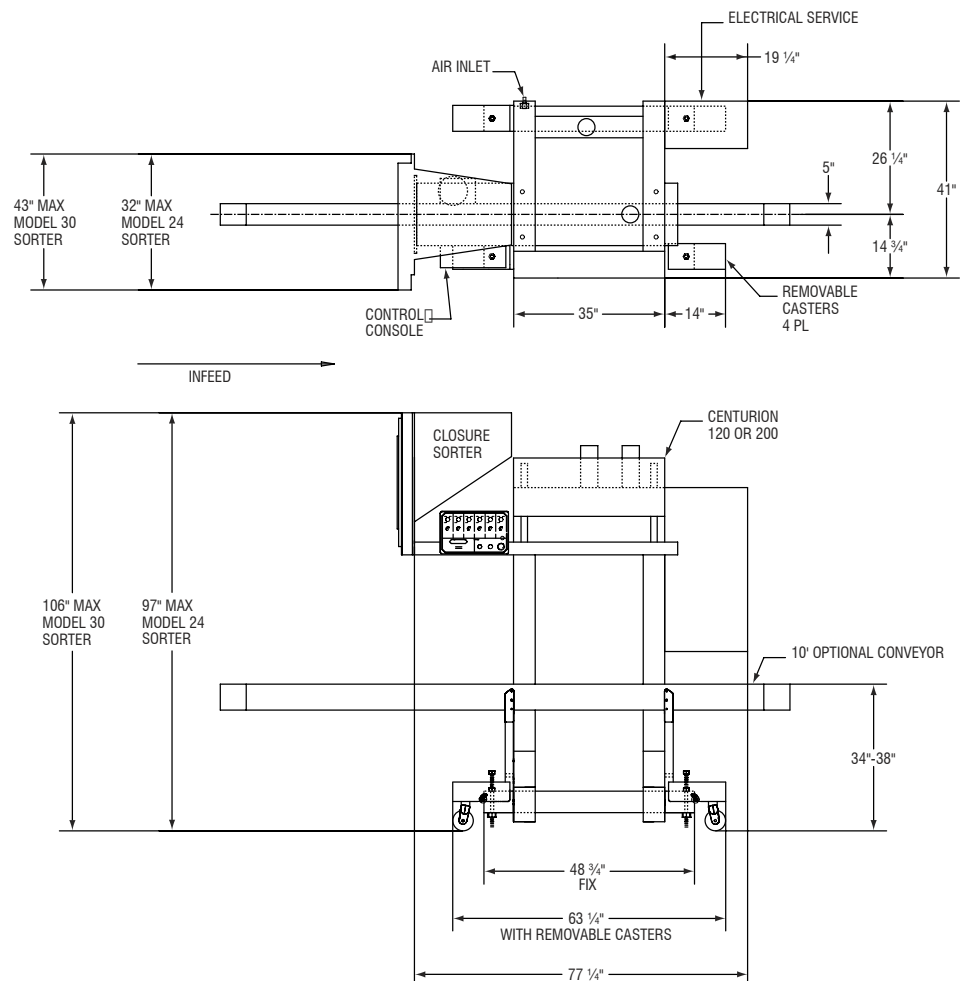
## Operations

Caps are loaded into the hopper located on top of the **CENTURION** unit. The vertical face sorting ring rotates, which initiates the sorting and feeding of the caps. Caps are then gravitationally fed down through the delivery chute and into the cap chute-end or "pick-up" point. As containers travel underneath the cap pick-up point, the caps are placed precisely onto the neck finish of the container and then continue on through the torquing disks. (To prevent cross-threading, some style caps will be turned in a reverse direction at station one, to properly seat the cap threads). As the containers travel through the capper, the torquing disks seat the closure and final torque is applied. A detection system is located high in the cap chute, which automatically controls the start and stop of the sorter, thereby maintaining a continuous flow of caps without unnecessary tumbling of closures in the hopper.

Pack West designs and builds five different styles of sorters to handle most every known cap.

## Options

- Explosion-proof package
- Chemical-resistant package
- Variable speed conveyor, plus drive
- Line Surge protection
- Double-high gripper belts for added stability
- 6 or 8 quill configurations depending on cap torque and speed requirements
- Systems available with various Human Machine Interface Platforms
- Adjustable or dedicated escapements and chute-ends
- Glass Guard System that fully encloses machine and conveyor system
- Flexible cable adjustment points for the container gripper system, along with the rear and front torquing disks, safely located on operator panel above the quill housing



Pack West Machinery Co.  
5316 N. Irwindale Ave.  
Irwindale, California 91706  
Phone: 626-814-4766  
Fax: 626-814-1615  
[www.PACKWEST.com](http://www.PACKWEST.com)