

# *FLEXIBILITY WITHOUT TOOLING*

## **CENTURION** Series In-Line Capper / Torquer With Cap Elevator / Sorter / Feeder (CESF)

### **What's New With The CENTURION Series?**

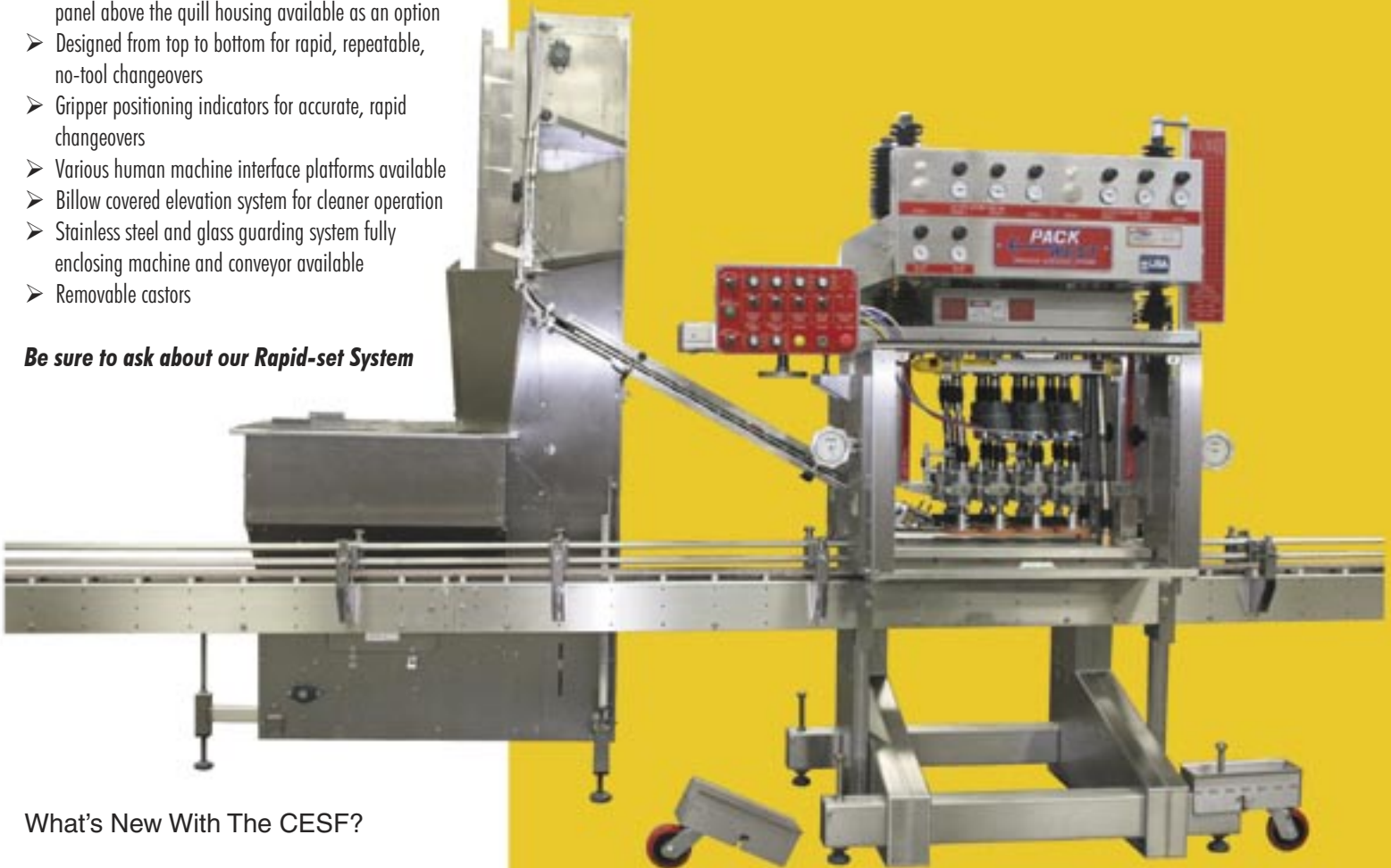
- Fully welded type 304 stainless steel frame
- Easy access lube and maintenance
- Redesigned, fully enclosed gripper belt system for greater stability and cleaner operation
- Flexible cable adjustment points for the rear and front torquing disks safely located on operator panel above the quill housing available as an option
- Designed from top to bottom for rapid, repeatable, no-tool changeovers
- Gripper positioning indicators for accurate, rapid changeovers
- Various human machine interface platforms available
- Billow covered elevation system for cleaner operation
- Stainless steel and glass guarding system fully enclosing machine and conveyor available
- Removable castors

### ***Be sure to ask about our Rapid-set System***

*A Standard Approach  
To Special Problems*

**PACK  
WEST**

A W.J. Ellison Company  
[www.PACKWEST.com](http://www.PACKWEST.com)



### **What's New With The CESF?**

- Snap on / pull off, no tool cap flights on elevator belt for rapid, no-tool, repeatable changeovers
- Multi-purpose flights machined on both sides to handle different styles and sizes of caps with fewer change parts. Stepped or contour Cap Flights for custom caps also available
- Elevator Belt with multi-position points for Quick-Change Cap Flights

C.E.O., William J. Ellison, and every Pack West employee, is extremely proud of our full line of in-line and rotary fillers and cappers. Every machined and fabricated part, from nuts to sprockets, is designed and built by Pack West at our facility in Irwindale, California. Since we use no job shops, we can assure our customers that all standard parts that are ordered by noon are shipped the next business day. The few purchased parts we do use on our machines, such as drives and motors, belts and hoses, are from the highest quality, American companies.

# Features and Specifications

## Operations

Caps are loaded at the operator level into the Cap Elevator / Sorter / Feeder (CESF) bin located satellite to the **CENTURION** unit. A flighted belt gently lifts caps up the vertical face of the elevator, riding on quick-change flights. When the caps are lifted by the flights from the inventory, with the top sides facing out, gravity causes them to fall back into the inventory. Caps that are in the correct position (top sides against the belt) are then delivered up the vertical face to the blow off area where low pressure air gently blows them across and down the back spill way, to the delivery chute, properly oriented, and into the cap chute end, or "pick-up point". (Flights can be quickly changed by simply pulling them off and repositioning them onto the multi-position belt based on cap diameter).

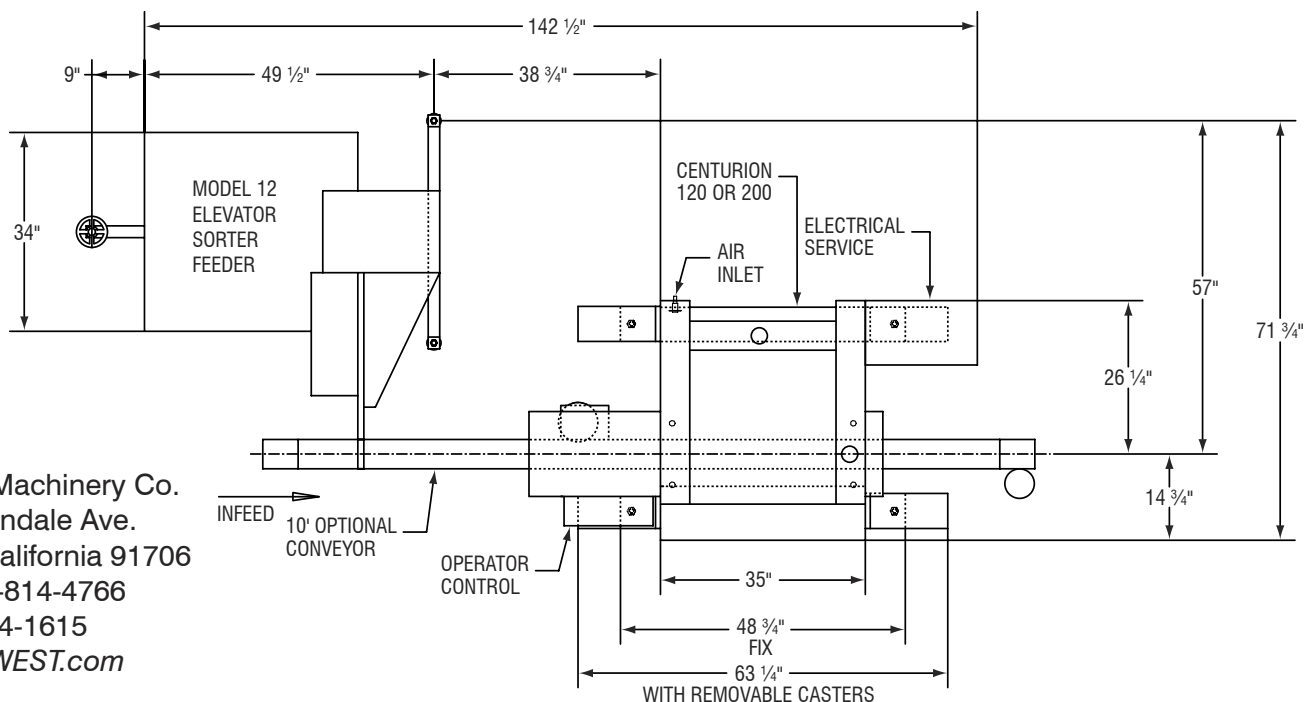
As containers travel underneath the cap pick-up point, the caps are placed precisely onto the neck finish of the container, then continues through the torquing disks. (To prevent cross-threading, some style caps will be turned in a reverse direction at station one, to properly seat the cap threads). As the containers travel through the capper, the torquing disks seat the closure and final torque is applied. A detection system is located high in the cap chute, which automatically controls the start and stop of the CESF, thereby maintaining a continuous flow of caps without unnecessary tumbling of closures.

The CESF is available in two models: the Model 12 (7 cubic feet) and the Model 24 (14 cubic feet), and is constructed predominantly of type 304 stainless steel, including the cap delivery system, clear to and including, the cap pick-up point. The unit handles virtually any style cap from 20 to 120 mm, with cap chute-end available as either dedicated or adjustable. For maximum efficiency, both models are tooled with multi-use Cap Flights that can be machined to handle one array of caps on the top sides of the flights and another set, or a custom cap, on the bottom sides. For example, the top side could be  $\frac{3}{4}$  inch for a very tall, domed 89 mm jar cap and the bottom side  $\frac{3}{8}$  inch wide for a standard 28-400 closure. Specially machined flights with a step or contour are also available for custom caps. This eliminates the need for a whole second set of change parts.

Pack West designs and builds five different styles of sorters to handle most every known cap. The CESF is a gravity system and therefore handles caps that are wider than they are tall.

## Options

- Explosion-proof package
- Chemical-resistant package
- Variable speed conveyor, plus drive
- Line Surge protection
- Double-high gripper belts for added stability
- 6 or 8 quill configurations depending on cap torque and speed requirements
- Systems available with various Human Machine Interface Platforms
- Adjustable or dedicated escapements and chute-ends
- Glass Guard System that fully encloses machine and conveyor system
- Flexible cable adjustment points for the container gripper system, along with the rear and front torquing disks, safely located on operator panel above the quill housing



Pack West Machinery Co.  
5316 N. Irwindale Ave.  
Irwindale, California 91706  
Phone: 626-814-4766  
Fax: 626-814-1615  
[www.PACKWEST.com](http://www.PACKWEST.com)